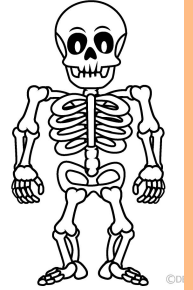


# Unit of Inquiry - Who We Are



Our body is a collection of many different systems that depend on each other.

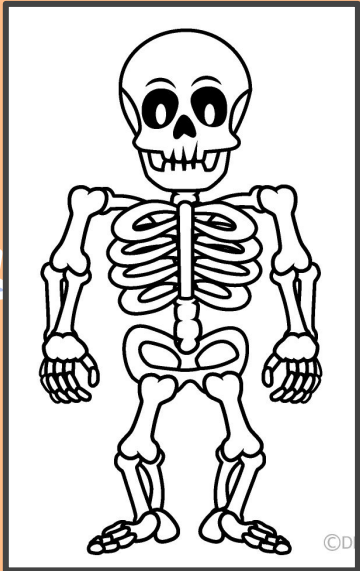


The Central Idea

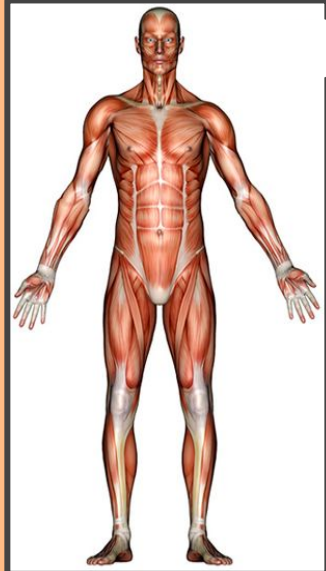


These are the body systems we studied with a focus on how these systems depend on each other.

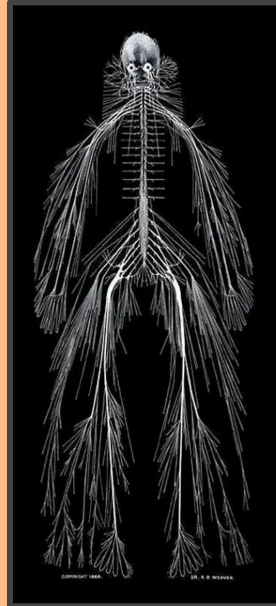
Skeletal



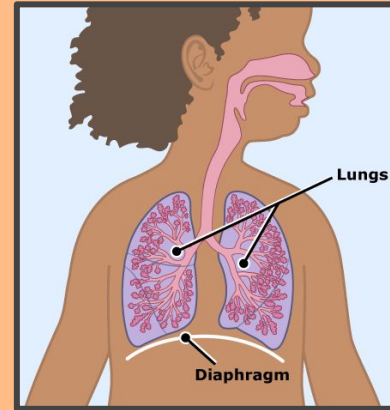
Muscular



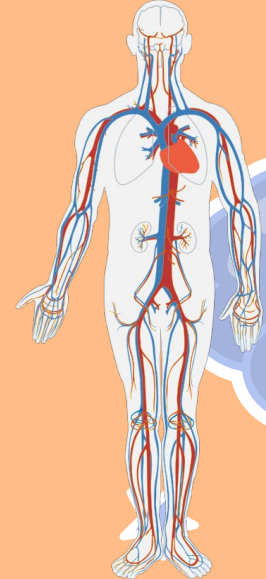
Nervous



Respiratory



Circulatory



# IB PYP Key Concepts

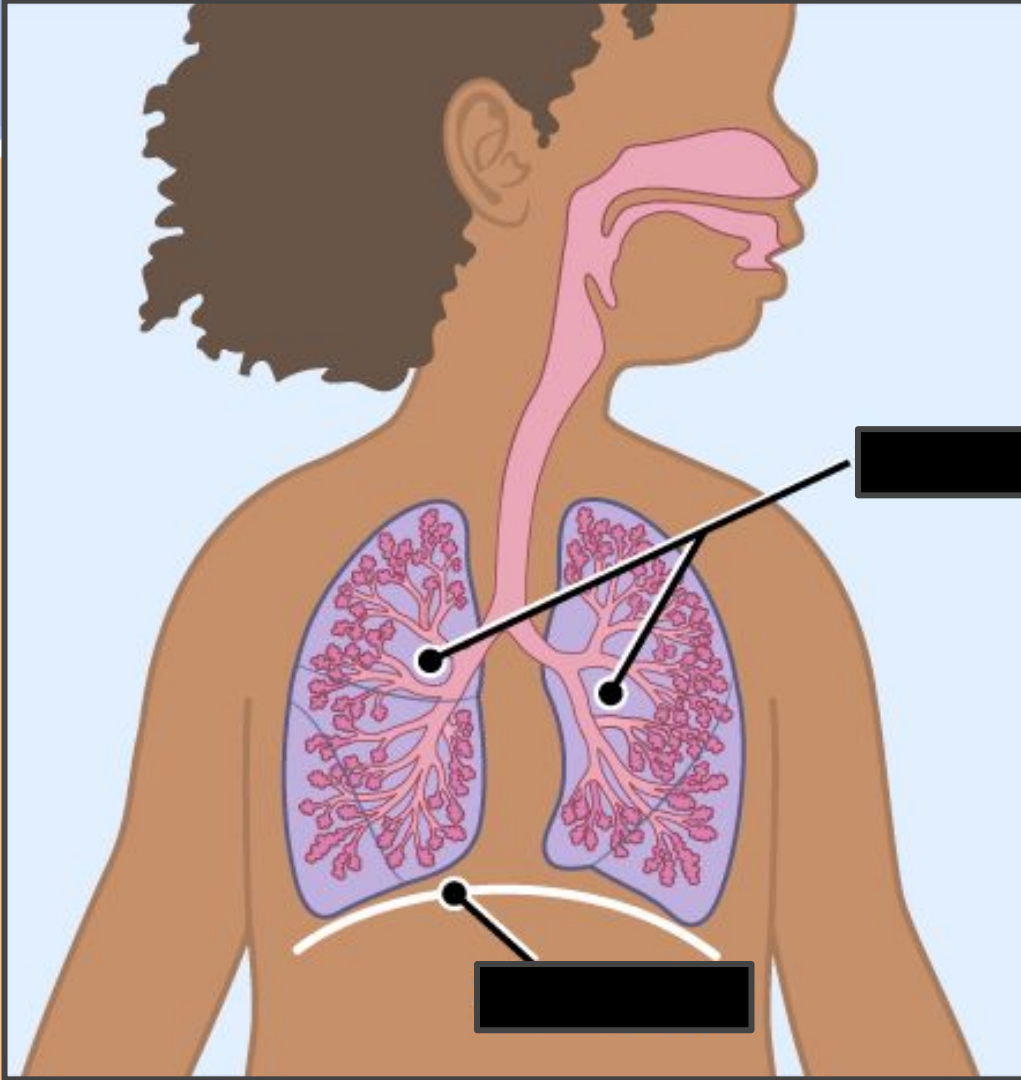
This incorporates  
the IB Key Concepts  
of *Function* and  
*Connection*.



# Student-Led Learning

But how does student-led learning work in the classroom?

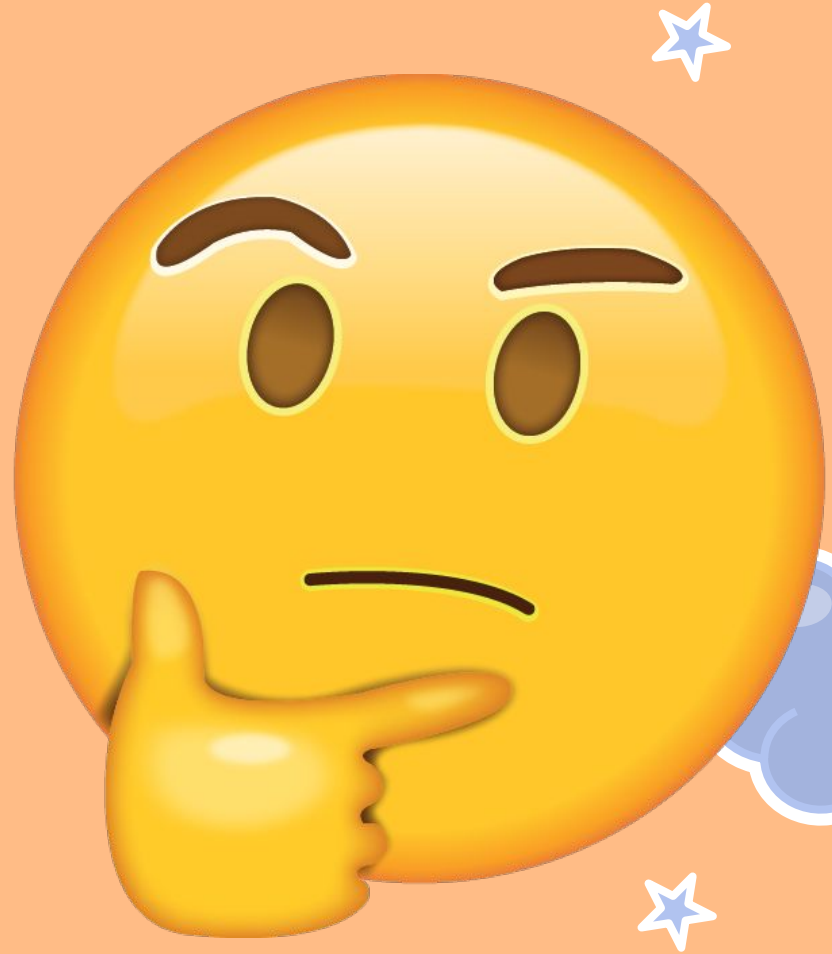




We were  
studying the  
respiratory  
system.

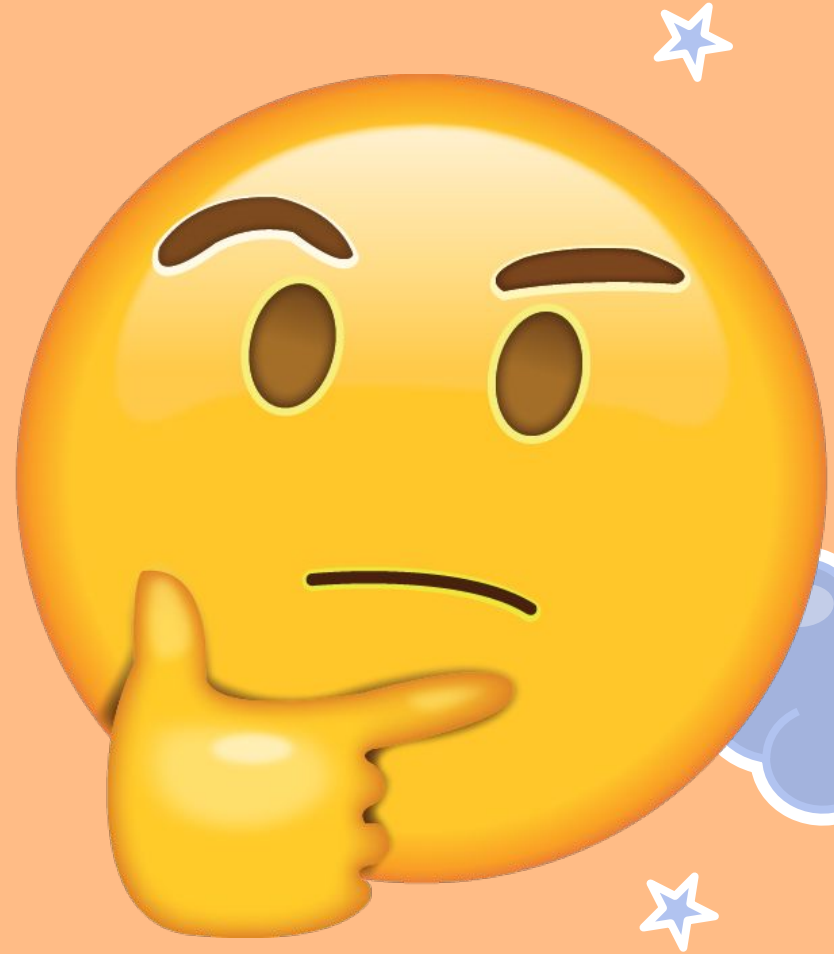
There was a  
student  
question:

*‘My grandfather  
had lung cancer.  
What is cancer?’*

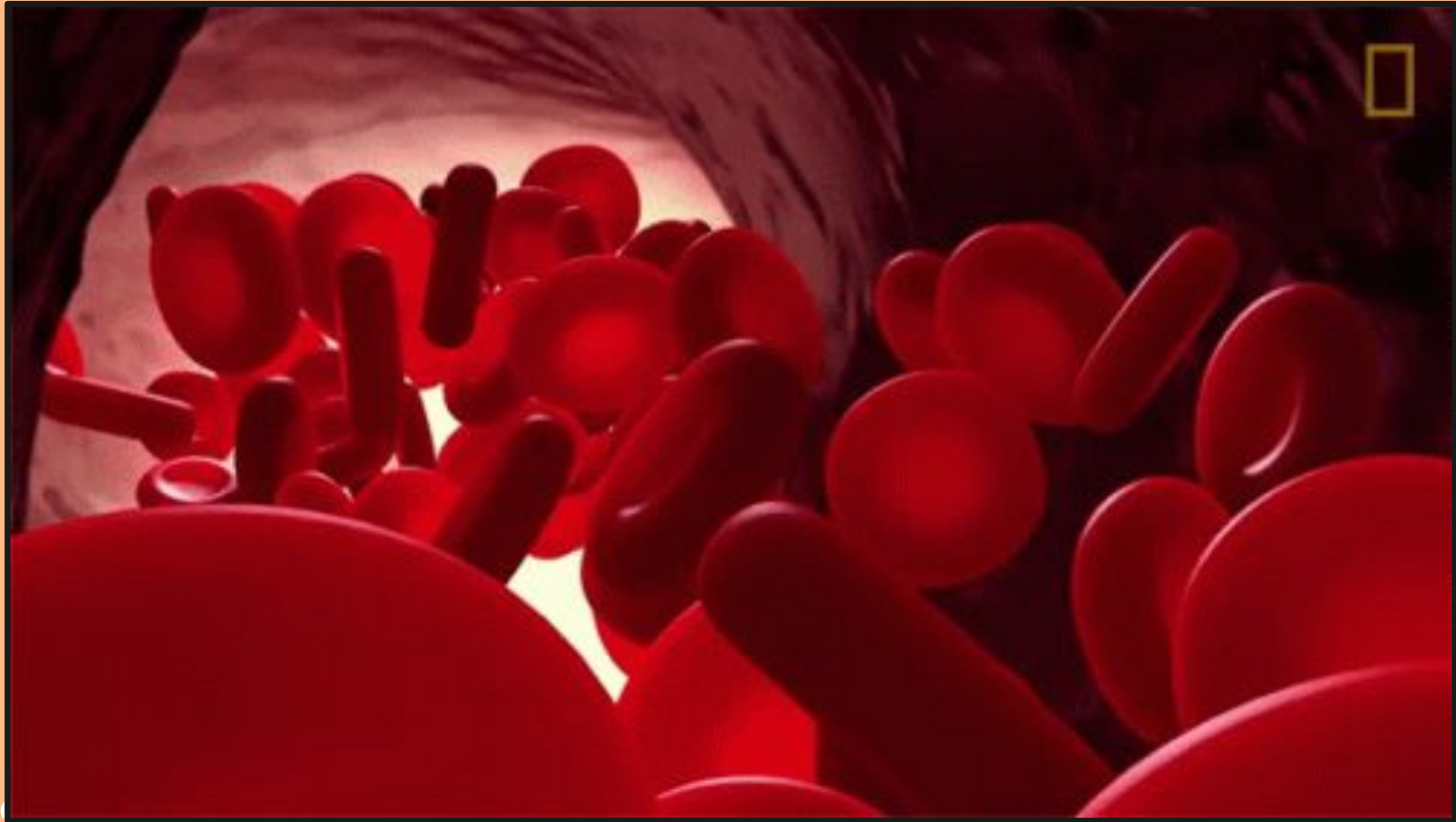


We followed this line of  
student-led inquiry.

But what do you need  
to understand to  
understand cancer?



You need to know our bodies are made of cells.

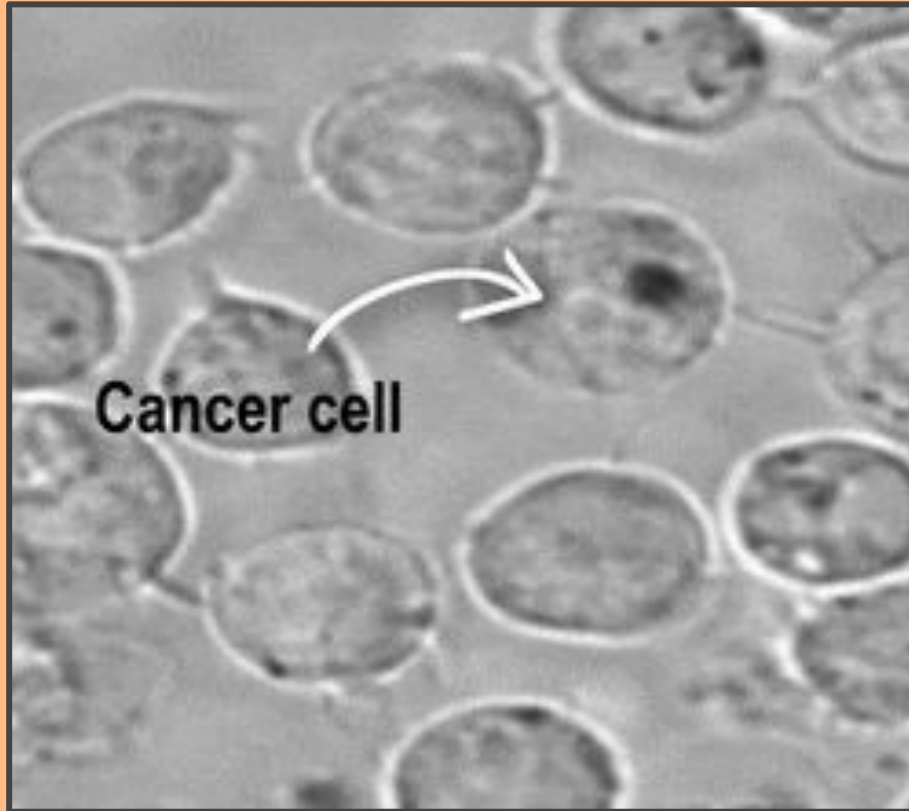




**These cells split and multiply.**

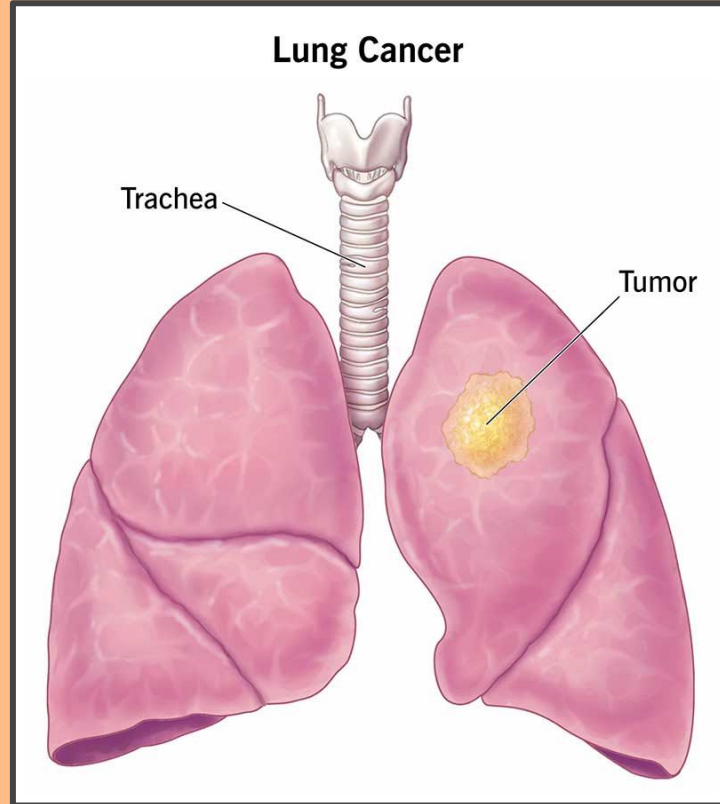


Sometimes this goes wrong...



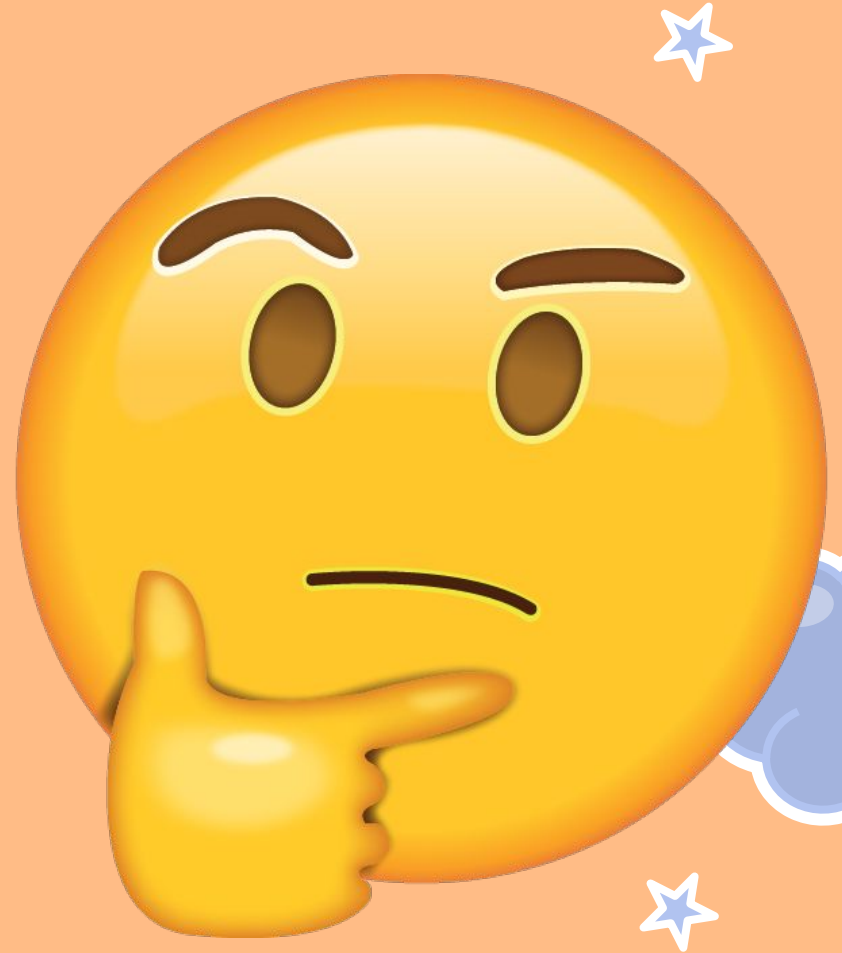
# Cancer

Cancer is caused when the body grows something that it shouldn't. This is called a tumor.



This led into a student-led line of inquiry about what caused cancer.

We researched some behaviors that increase the chances of having cancer.



# What increases the risk of cancer?

Cigarette  
smoking.



# What increases the risk of cancer?

Too  
much  
Sun.



What increases the risk of cancer?

Unhealthy  
food.



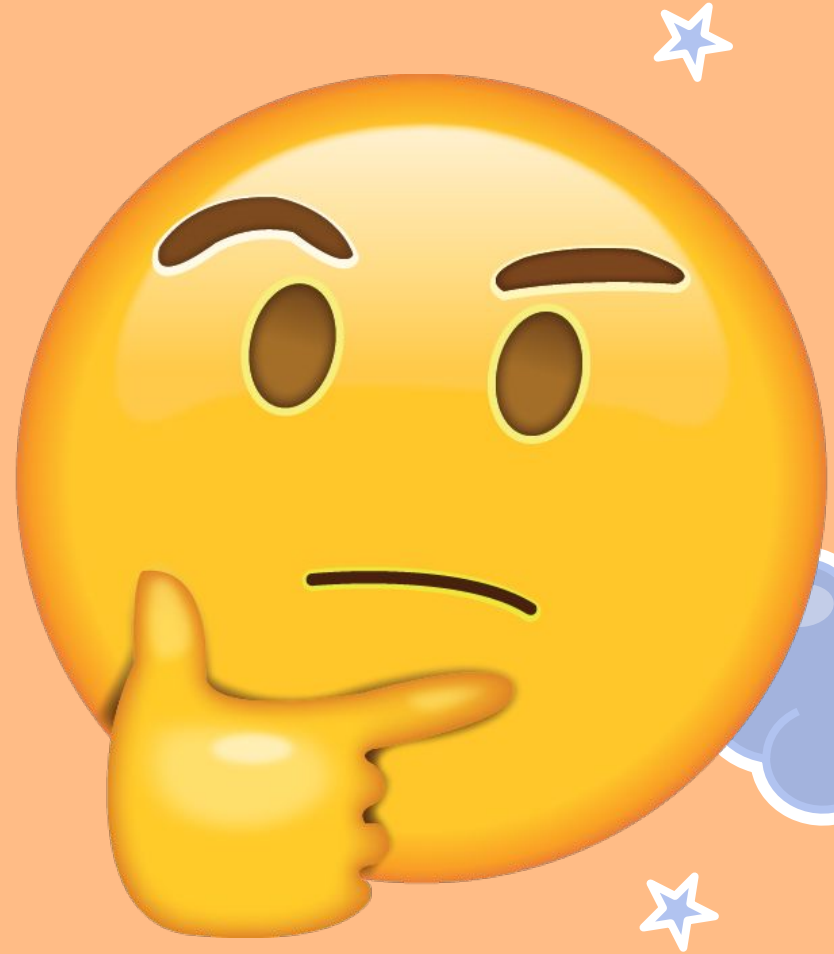
# What increases the risk of cancer?

Drinking  
alcohol.



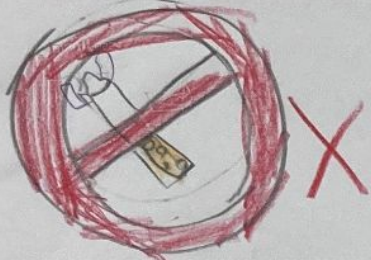


Students created a poster demonstrating these risks and thinking of healthier choices.



Today, we are thinking of things that harm our bodies but also ways we can take care of them.

Things that harm our bodies



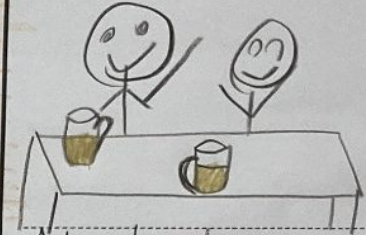
Smoking



Unhealthy food



Too much sun

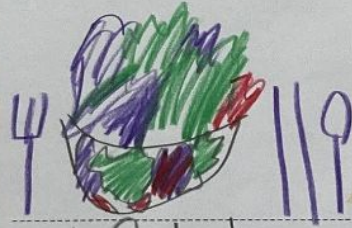


Alcohol

Things that help our bodies



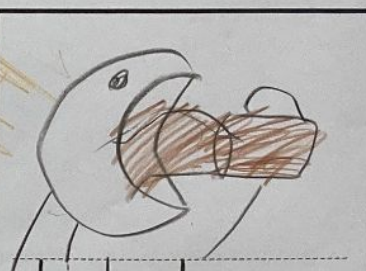
Walking outside



eat Salad



wear a hat



drink tea

# IB PYP Key Concepts

This  
incorporates  
the IB Key  
Concept of  
*Responsibility.*

